

PROACT.®

REFERENCE : PA233

SIZES : XS_S_M_L_XL_XXL_3XL

COMPOSITION :

Main fabric : Brushed Polyester / Elastane jersey 90/10 - 270
For back, sleeves, inside and outside collar and under front tab
90%polyester / 10%elastane

Main fabric : Nylon ripstop 430T PA coating - 35 For front,
facing pocket, collar yoke and back inside yoke 100%
polyamide

Wad 1 : Polyfil 160 For inner fronts padded 100%polyester

Lining : Polyester 210T - 60 For inner front and pockets bag
100%polyester

WEIGHT :

Main fabric : 270 gsm

Main fabric : 35 gsm

Wad 1 : 160 gsm

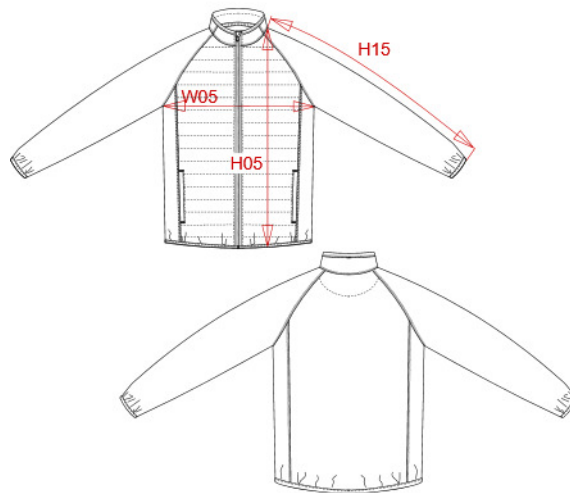
Lining : 60 gsm

TECHNICAL DETAIL :

Water-repellent fabric 1 + 2

ARTICLE WEIGHT :

420 gr/pc



| DESCRIPTION | |
|---------------------|---------------------------------------|
| Français : | Veste sport bi-matière |
| English : | Dual-fabric sports jacket |
| Nederlands : | Sportjas in twee stoffen |
| Deutsch : | Sportweste aus Bi-Material |
| Español : | Chaqueta de deporte de dos materiales |
| Italiano : | Giacca sportiva bimatériale |
| Português : | Casaco de desporto bi-matéria |

| COLORS | PANTONE SERIGRAPHIE |
|----------------------------|------------------------|
| Black | Black |
| Dark royal blue / Black | 654C / Black |
| Sporty grey / Black | 425C / Black |
| Sporty navy | 7546C |

| MEASUREMENT | | | | | | | |
|---|-------|-------|-------|-------|-------|-------|-------|
| Description | XS | S | M | L | XL | XXL | 3XL |
| H05 Hauteur totale / Total height | 66 | 68 | 70 | 72 | 74 | 76 | 78 |
| W05 1/2 largeur poitrine / 1/2 chest width | 46,50 | 49,50 | 52,50 | 55,50 | 58,50 | 61,50 | 64,50 |
| H15 Longueur manche / Sleeve length | 72,25 | 75 | 77,75 | 80,50 | 83,25 | 86 | 88,75 |

| CARE LABEL | | | | |
|------------|--|--|--|--|
| | | | | |

| PACKING | |
|---------|---|
| Box | 10 pcs / box All sizes => L:60cm W:40cm H:19cm GW:5.60kg NW:4.40kg |