

PR553 'Essential' Chef's Trousers

Description

Pull-on chef's trousers in available in plain and checked pattern. The elasticated waist also has a drawstring for a more gathered, fitted style round the waist and there are two useful swing pockets to the side.

Product Features:

- Elasticated waist
- Swing pockets
- Draw cord

Available In:

XS, S, M, L, XL, 2XL, 3XL, 4XL*, 5XL*

Certifications:



Colours:

Colour	Pantone	C	M	Y	K	
Black/ White Check	Black	Black c	0	0	0	100
	White	White	0	0	0	0
Black *	Black c	0	0	0	100	

Fabric:

65% Polyester, 35% Cotton Twill, 195gsm.

Suggested Decoration:

Screen Print, Transfer Print, Embroidery

Country of Origin:

Bangladesh

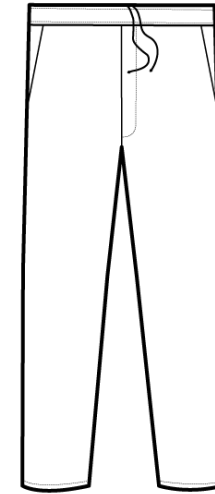
Commodity Code:

6203431100

Features:



Wash Care:



Carton Information:

Sizes	Carton	Pack	SKU's	Carton Weight	Carton Dimensions
All sizes	24	6	25	12.2kg approx.	58cmx38cmx20cm

Garment Sizes:

Call Size	XS	S	M	L	XL	2XL	3XL	4XL	5XL
Waist to fit"	28-30	32-34	34-36	36-38	38-40	42-44	44-46	46-48	48-50
Waist to fit cm	71-76	81-86	86-91	91-96	96-101	106-111	111-116	116-126	121-126
Waist actual cm	72	84	96	108	120	132	144	156	166
DE,NL	36	38	42	44	46	50	54	58	60
FR,ES,PT	36	38	42	44	46	50	54	58	60
IT	42	44	46	48	50	52	54	56	58