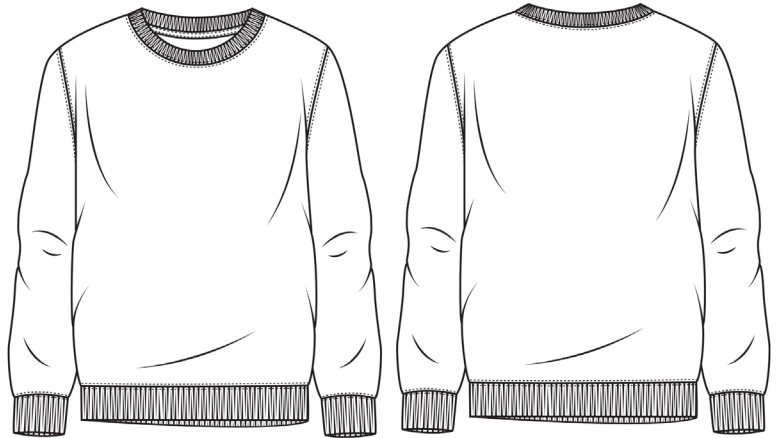


## FABRIC

80% cotton 20% polyester, 280gsm  
 85% cotton, 15% viscose (heather grey)

## FEATURES/STYLE & FIT

Regular fit  
 100% cotton face  
 Self colour tape to back neck for comfort  
 Taped shoulders  
 Self fabric double layered cuff, neck and welt with twin needle stitching  
 Double stitched armholes and shoulders  
 Tear out back neck label for easy rebranding



## COLOURS



**BLACK**  
 PANTONE BLACK C  
 C:0 M:0 Y:0 K:100

**DARK GREY**  
 PANTONE 424 C  
 C:0 M:0 Y:0 K:61

**HEATHER GREY**  
 PANTONE COOL GREY 8 C  
 C:0 M:1 Y:0 K:43

**NAVY**  
 PANTONE 2767 C  
 C:100 M:78 Y:0 K:54

\*These colour references are provided for replication of Kustom Kit® colours in printed materials and online only. Whilst these represent the closest possible pantone match, they should not be used as a direct comparison to actual garment colours.

## WASHCARE

Maximum washing temperature 30°C  
 Mild process  
 Do not bleach  
 Do not tumble dry  
 Iron at max temperature of 150°C  
 Do not dry clean

## COUNTRY OF ORIGIN

Bangladesh

## COMMODITY CODE

6110 20 91 00

## SIZE MEASUREMENTS

| Size                                    | XS    | S     | M   | L   | XL  | XXL   |
|---|-------|-------|-----|-----|-----|-------|
| Chest to fit in inches                  | 32-34 | 36-38 | 40  | 42  | 44  | 46-48 |
| Actual chest in cm                      | 93    | 106   | 111 | 116 | 122 | 130   |
| Back length in cm (from shoulder point) | 66    | 70    | 73  | 75  | 75  | 77    |
| Sleeve length in cm (overarm inc. cuff) | 64    | 66    | 67  | 68  | 69  | 70    |

## PACKING

| Size       | XS | S  | M  | L  | XL | XXL |
|------------|----|----|----|----|----|-----|
| PCS/PACKS  | 5  | 5  | 5  | 5  | 5  | 5   |
| PCS/CARTON | 25 | 25 | 25 | 25 | 25 | 25  |

## CERTIFICATIONS



This factory is audited by Amfori BSCL.