



# 64800 / GD017

## Softstyle Adult Pique Polo

**DETAILS**

- Fabric**
- Yarn Count**
- Features**

100% Ring Spun Cotton, 177.0 G/SqM (White 172.0 G/SqM)  
 31/1  
 Made with our soft ring spun cotton and cotton blends.  
 Softstyle features a double pique that is durable and breathable, ideal for embroidery.  
 Proud Better Cotton™ member.  
 Cotton products from Gildan support more sustainable + ethical cotton farming.  
 Companion style: 64800L  
 Soft ring spun fabric feels great against your skin  
 Clean finished placket with dyed-to-match buttons  
 Rolled forward shoulders  
 Modern classic fit, side seamed body  
 High-performing black tear-away label

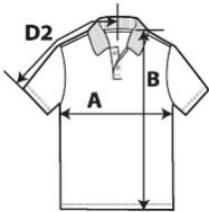
**Country of Origin**

**Case Packs**

**Colours**

**SKU's**

Bangladesh  
 S - 4XL      36 PIECES  
                   13  
                   91



**SPECIFICATIONS**

Centimeters	Tol-	Tol+	S	M	L	XL	2XL	3XL	4XL
<b>Chest (A)</b>	2.540	2.540	51.500	54.700	57.200	60.400	63.600	67.400	71.200
<b>Length from HPS (B)</b>	2.540	2.540	71.200	75.000	77.500	80.100	82.600	85.200	87.700
<b>Sleeve length (Center back) (D2)</b>	1.905	1.905	44.500	47.000	48.900	52.100	54.700	57.800	61.000

Inches	Tol-	Tol+	S	M	L	XL	2XL	3XL	4XL
<b>Chest (A)</b>	1.000	1.000	20.280	21.535	22.520	23.780	25.040	26.535	28.030
<b>Length from HPS (B)</b>	1.000	1.000	28.030	29.530	30.510	31.540	32.520	33.540	34.530
<b>Sleeve length (Center back) (D2)</b>	0.750	0.750	17.520	18.500	19.250	20.510	21.535	22.760	24.020

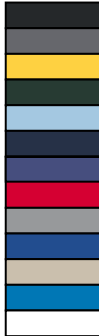
**COLOURS**

- Black
- Charcoal
- Daisy
- Forest Green
- Light Blue
- Navy
- Purple
- Red
- Ring Spun Sport Grey
- Royal
- Sand
- Sapphire
- White

**Code**

- 036
- 042
- 098
- 033
- 069
- 032
- 081
- 040
- 295
- 051
- 038
- 026
- 030

**Colour Chip**



**Sizes**

- S-4XL
- S-4XL
- S-4XL
- S-4XL
- S-4XL
- S-4XL
- S-4XL
- S-4XL
- S-4XL
- S-4XL
- S-4XL
- S-4XL
- S-4XL

**Comments**

90% Cotton, 10% Polyester

**CHANGES**

Total Net Change 0 SKU's