



## The women's body warmer

**Fitted**

**XS > XXL**

**75 GSM**

### Details

- Sleeveless
- High collar
- Reverse nylon zip at center front
- Zipped welt pockets with extra grosgrain puller
- Elastic tape binding at armhole
- Fully quilted
- Side panels for better shape
- Inside seams with binding finish
- Bottom hem with adjustable plastic stopper and elastic cord

### Composition

Shell - Plain Weave  
 100% Polyester - Recycled - 75 GSM  
 Fluorine-free DWR  
 Padding  
 100% Polyester - Recycled -

Lining - Plain Weave  
 100% Polyester - Recycled  
 Fluorine-free DWR

### Care

Wash similar colours together, no ironing, wash inside out. Close all zips before washing.



### Country of origin

Weaving : China  
 Dyeing : China  
 Assembly : Bangladesh or China



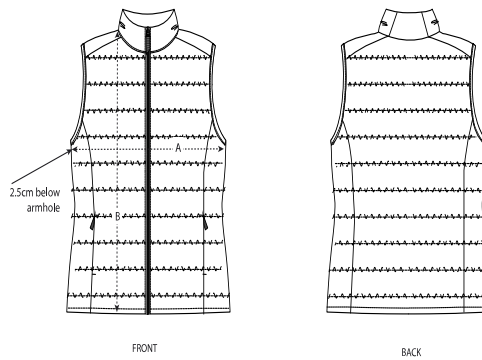
Whites



Colors



Size Guide



Sizes		XS	S	M	L	XL	XXL
A	Half Chest	47	50	53	56	59	62
B	Body Length	58	60	62	64	66	68

Packing

Sizes	XS	S	M	L	XL	XXL
Pieces/bag	5	5	5	5	5	5
Pieces/box	10	10	10	10	10	10