

NEW STYLE



WOMEN POLOS

STPW333- STELLA ELLISER



The women's polo

Piqué
95% Organic ring-spun combed cotton, 5% Elastane
Fitted
200 GSM

- Set-in sleeve
- Flat knit rib on collar and sleeve hem
- Inside heavy single jersey back neck tape
- Front placket with 2 buttons in matching body colour
- Slit at side seams with heavy single jersey facing
- Single needle topstitch at shoulder seams
- Bottom hem with narrow double needle topstitch

WHITES



WHITE

COLORS



BLACK

ANTHRACITE

SKY BLUE

ROYAL BLUE

FRENCH NAVY

RED

BURGUNDY

COTTON PINK

JOLIDA

NEW

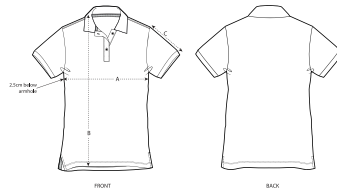


ORCHID FLOWER

ESSENTIAL HEATHERS

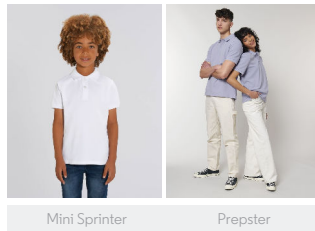


HEATHER GREY



SIZES	XXS	XS	S	M	L	XL	XXL	XXXL
A Half Chest	38.5	41	43.5	46.5	49.5	52.5	55.5	58.5
B Body Length	59	61	63	65	67	68	68	68
C Sleeve Length	16.5	17.5	17.5	18.5	18.5	19.5	19.5	20.5

Combo options



Printing Specifications

For suitable print techniques, please download our printing guide

Certifications & memberships



Wash Instructions

Wash similar colours together, no ironing on print, wash and iron inside out.

