



WOMEN T-SHIRTS
SXI54 - STELLA SINGER



The iconic women's long sleeve t-shirt

Medium Fit

- Set-in sleeve
- Self fabric at neck collar
- Inside back neck tape in self fabric
- Sleeve hem and bottom hem with narrow double topstitch

Combo options



WHITES



COLORS



ESSENTIAL HEATHERS



Shell : Single Jersey , 100% Organic ring-spun combed cotton , Fabric washed , 120 GSM

Printing Specifications

For suitable print techniques, please download our printing guide

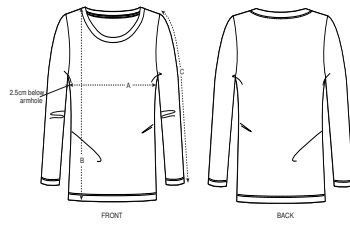
Certifications & memberships



Wash Instructions

Wash similar colours together, do not iron on print, wash and iron inside out.





SIZES		XS	S	M	L	XL
A	Half Chest	42	44.5	47.5	50.5	53.5
B	Body Length	62	64	66	68	69
C	Sleeve Length	60.5	61.5	62.5	63.5	64