



NEW STYLE



ESSENTIAL HEATHERS



WOMEN CREW NECK SWEATSHIRTS  
**SX191 - STELLA WILDER**



**The women's oversized crew neck sweatshirt**

Oversized

- Raglan sleeve
- 1x1 rib at neck collar and sleeve hem
- Self fabric at bottom hem
- Inside herringbone back neck tape
- Slit at side seams with single herringbone facing
- Self fabric half moon at back neck
- Single needle topstitch on all seams
- Back length is longer than front length

Combo options



Stella Ryder

Shell : Terry Sweatshirt, 85% Organic ring-spun combed cotton , 15% Recycled polyester , Fabric washed , Light sueded , 300 GSM

Printing Specifications

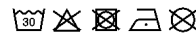
For suitable print techniques, please download our printing guide

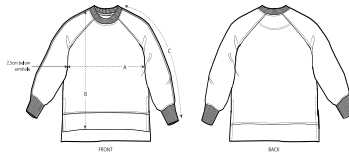
Certifications & memberships



Wash Instructions

Wash similar colours together, no ironing on print, wash and iron inside out.





SIZES		XS	S	M	L	XL	XXL
A	Half Chest	62.5	65	68	71	74	77
B	Body Length	63	65	67	69	70	71
C	Sleeve Length	68.5	70.5	72	73.5	74.5	75.8