

## PR610 Studed Polo Shirt

### Description

A heavyweight and durable workwear polo shirt that is ideal for food and hygiene sensitive environments. It fastens neatly with three studs on the placket. This polo shirt is styled with extra body length.

### Product Features:

- Three studed placket
- Extra body length
- Heavy-weight and durable pique knit
- Ribbed knit collar

### Available In:

S, M, L, XL, 2XL, 3XL

### Certifications:

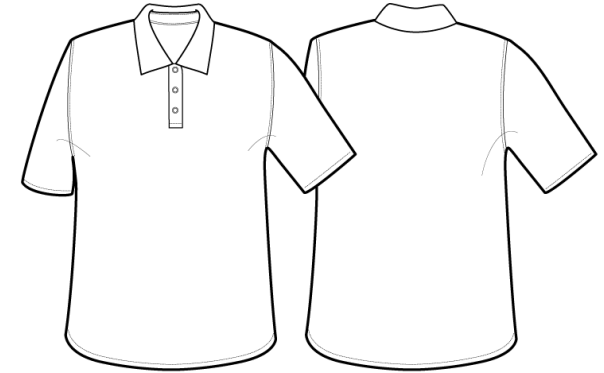


### Colours:

Colour	Pantone	C	M	Y	K
Black	Black c	0	0	0	100
Navy	533c	95	72	15	67
Royal	7687c	100	78	0	18
White	White	0	0	0	0

### Fabric:

65% Polyester, 35% Cotton Pique Knit, 200gsm.



### Suggested Decoration:

Screen Print, Transfer Print, Embroidery

### Country of Origin:

Bangladesh

### Commodity Code:

6105 20 1000

### Features:



### Wash Care:



### Carton Information:

Sizes	Carton	Pack	SKU's	Carton Weight	Carton Dimensions
All Sizes	50	5	24	18kg approx.	56cmx35cmx40cm

### Garment Sizes:

Call size	S	M	L	XL	2XL	3XL
Chest to fit"	34	38	42	46	50	52
Chest to fit cm	92	100	108	116	124	132
Chest actual cm	96	106	116	126	136	146
Back length cm	73.5	76	76	78.5	81	81