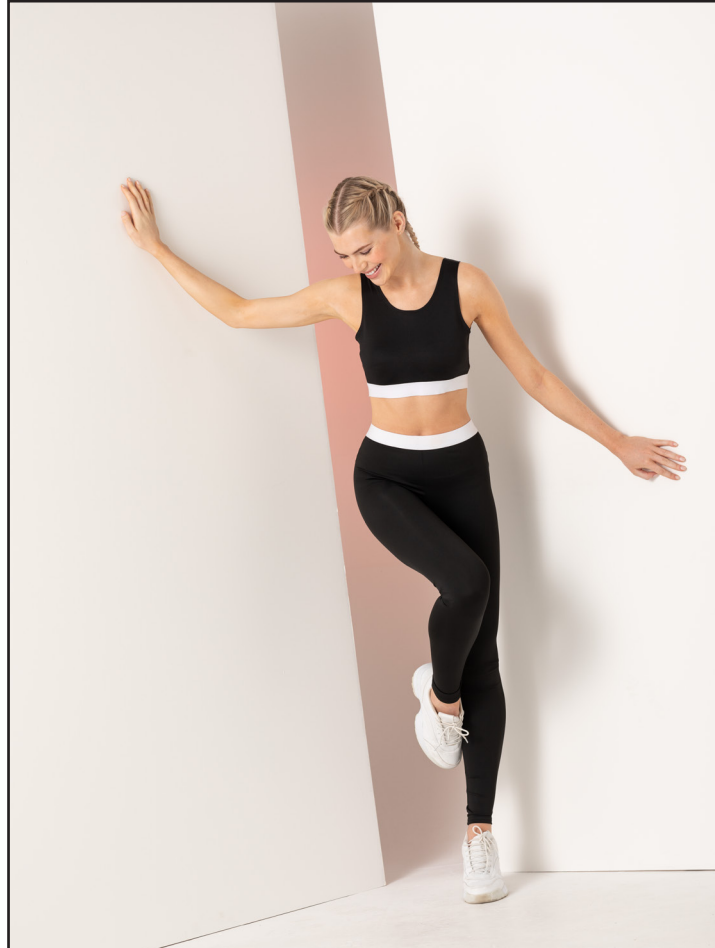




SK426
WOMEN'S FASHION LEGGINGS



Fabric: 88% Polyester,
12% Elastane
Single Jersey
(+ Jacquard Band)

Weight: 300gsm

Sizes: XS-XL

Carton: 36

Country of Origin: BANGLADESH

Commodity Code: 61046200

- Tear-out label
- Soft elastic jacquard waist band, suitable for sublimation printing
- Non-transparent stretch polyester fabric
- Matches Kids' SM426
- Coordinates with SK236 Fashion Crop Top & SK427 Fashion Cycling Shorts



- Wash at 40 degrees synthetic
- Wash dark colours separately
- Wash and dry inside out
- Dry out of direct heat and sunlight
- Do not tumble dry
- Iron on reverse



SK425
WOMEN'S FASHION LEGGINGS

Garment Measurements	XS	S	M	L	XL
Waist-cms	29	32	35	38	41
Hip-cms	35	38	41	44	47
Inside leg length-cms	78.5	78.5	78.5	78.5	78.5
To Fit Guide					
Waist-ins	26	28	30	32	34
Waist-cms	66	71	76	81	86

