

PR623 Women's Lined Polyester Waistcoat

Description

This ladies' waistcoat comes with a four button fastening down the front with two functional watch pockets to the sides. Fully lined and with a satin-feel back, this waistcoat features a buckle so the wearer can adjust the fit.

Product Features:

- Satin-feel back with adjuster
- Two functional watch pockets
- Four button fastening
- Fully lined

Available In:

2XS, XS, S, M, L, XL, 2XL

Certifications:

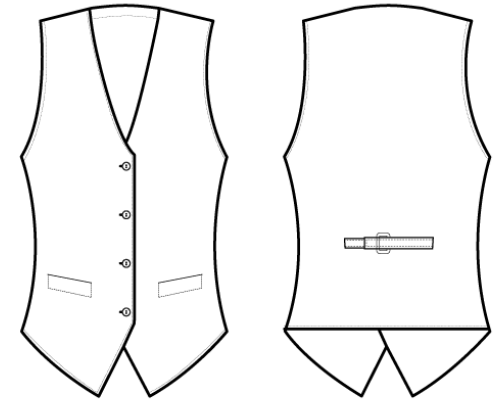


Colours:

| Colour | Pantone | C | M | Y | K |
|--------|---------|---|---|---|-----|
| Black | Black c | 0 | 0 | 0 | 100 |

Fabric:

100% Polyester Plain Weave, 185gsm.



Suggested Decoration:

Screen Print, Transfer Print, Embroidery

Country of Origin:

China

Commodity Code:

6211 43 1000

Features:



Wash Care:



Carton Information:

| Sizes | Carton | Pack | SKU's | Carton Weight | Carton Dimensions |
|-----------|--------|------|-------|---------------|-------------------|
| All Sizes | 24 | 6 | 7 | 10kg approx. | 60cmx40cmx22cm |

Garment Sizes:

| Call size | 2XS | XS | S | M | L | XL | 2XL |
|----------------|-----|----|----|----|-----|-----|-----|
| Bust to fit" | 27 | 29 | 32 | 34 | 37 | 40 | 44 |
| Bust to fit cm | 68 | 72 | 80 | 86 | 94 | 101 | 112 |
| Bust actual cm | 72 | 80 | 88 | 96 | 104 | 112 | 120 |
| Back length cm | 55 | 55 | 55 | 55 | 55 | 55 | 55 |